

PosiTector Powder Checker LD5820

Datasheet

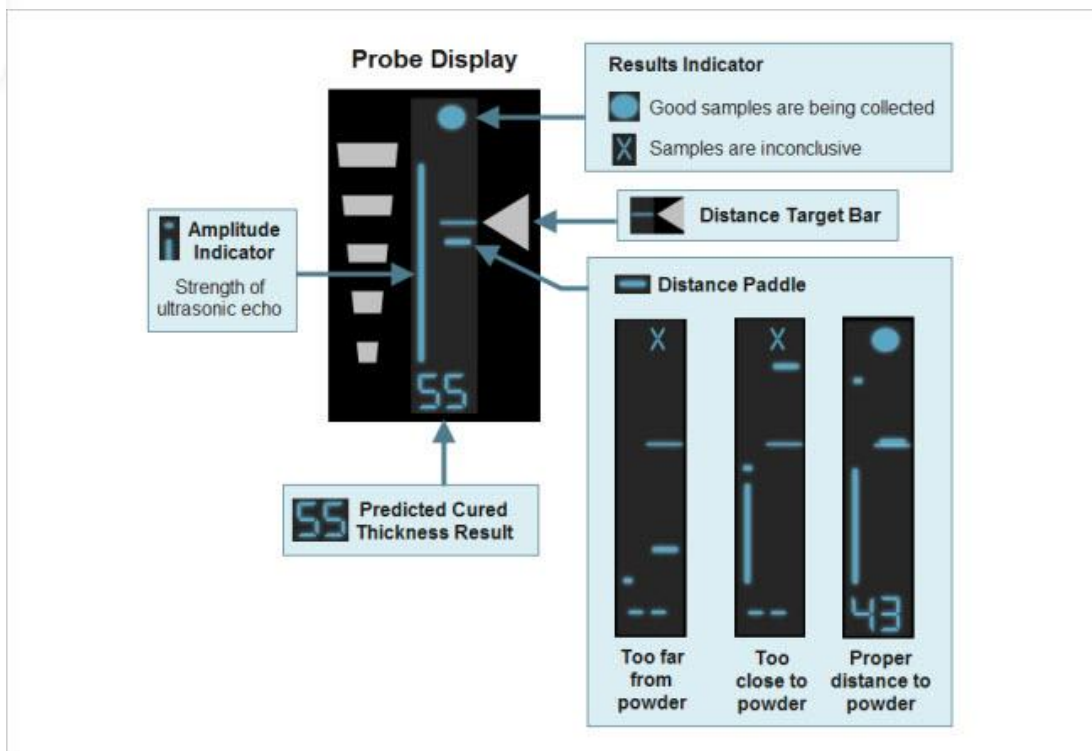
Rugged Features

The PosiTector PC Powder Checker was designed for use in industrial powder coating environments.



Probe Display

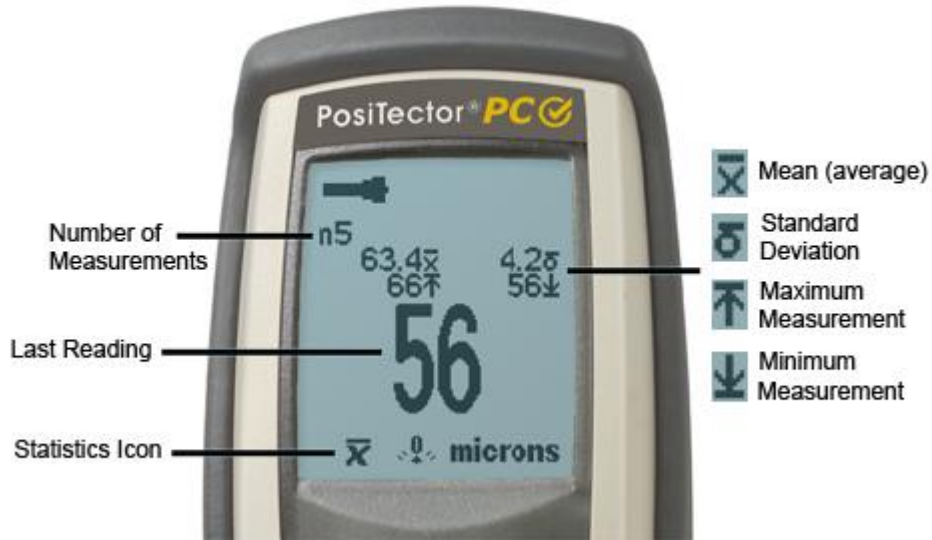
The following is an overview of the probe display during the measurement process (button pressed).



in surfor e probe apporvikaprotiel Qberflächenprofil even temperature oven temperature Client temperature viscosity viscosity Viskosität colour Alu
 leprüfung fineness of grind maatlijnheid Mahlfeynheit drying Time droogtijd Trockenzeit abrasion slijtvastheid Abriebfestigkeit inspection accessories I
 lanz & 'Haze' corrosion corrosie Korrosion coating thickness gauges coatingdikte meters Schichtdicken messgeräte flash point vlammpunt Flammpun
 che testapparatuur Klimaprüfung appearance uiterlijk Erscheinungsbild inspection kits inspectie kits Inspektionskoffer elasticity & resistance deformat
 onces weegschalen Waagen surface cleanliness oppervlaktezuiverheid Oberflächenreinheit film application filmapplicatie Filmaufziehgeräte coat

Statistics

The PosiTector PC can display basic statistical information as measurements are taken. Continually displays/updates statistics including min/max and average.



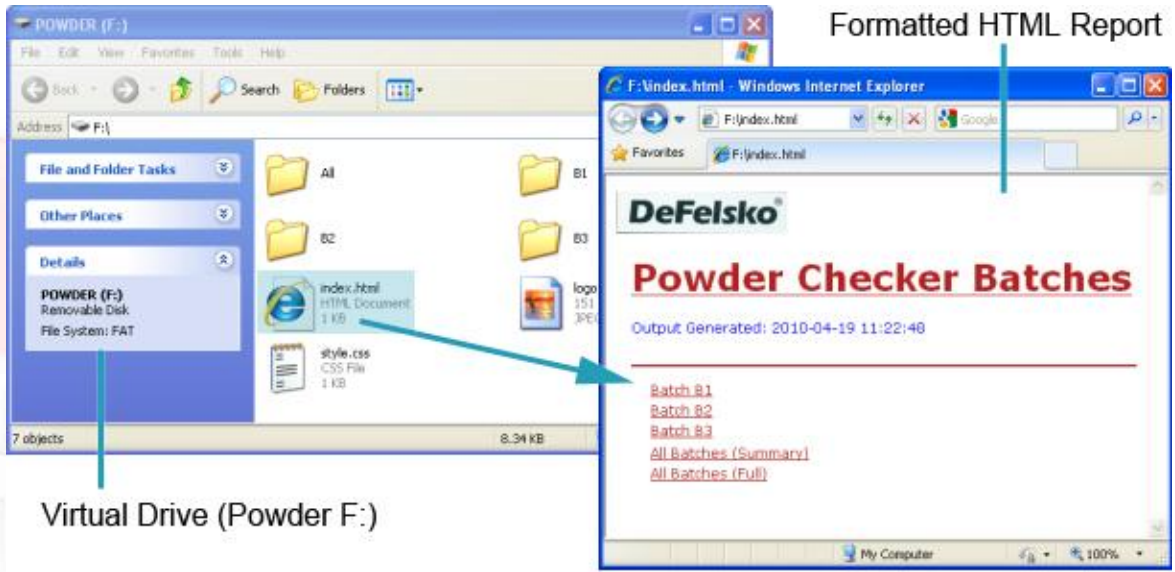
Memory

The PosiTector PC can record 1,000 measurements in up to 100 groups (batches) for on-screen statistical purposes (as shown above), for printing to an optional IR printer, or for transferring to a computer using the included USB cable. Readings are time-stamped as they are taken.

USB Mass Storage

The PosiTector PC Powder Checker uses a USB mass storage device class which provides a simple interface to retrieve data in a manner similar to USB flash drives, cameras, or digital audio players.

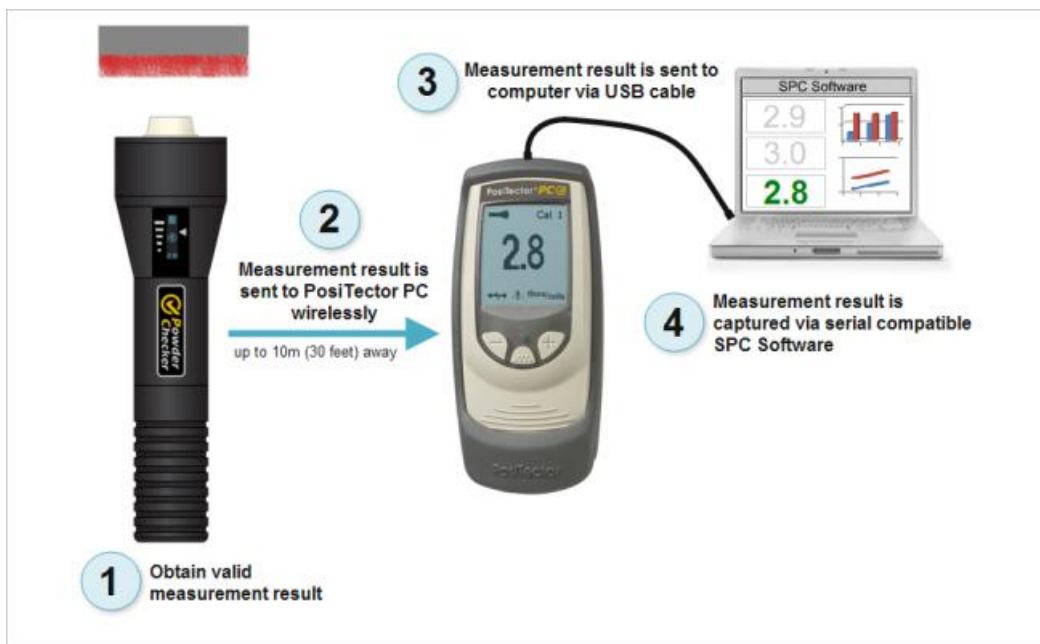
Any computer can view and download measurements stored in memory (in batches) by navigating a virtual drive labeled POWDER using the included USB cable.



A formatted HTML report is viewed by selecting the “index.html” file found in the root directory. Additionally, delimited text files (.txt) are located in each batch folder for easy import into database, spreadsheet and other compatible applications.

Transferring Live Measurement Results

Live measurement results can be sent to data collection software or spray booth controller using a serial gadget driver and the provided USB cable.



Optional IR Printer

IR Printer receives data via wireless infrared.

- Receives data via an invisible infrared beam.
- Prints both text and graphics
- Light weight
- Prints to Thermal Transfer Paper (no ink required)
- One year Warranty



Selectable display languages



Display Languages: English, French, German, Spanish, Chinese, Japanese, Portuguese, Italian, Norwegian, Russian, Czech, Polish and Korean.

Disclaimer

The information given in this sheet is not intended to be exhaustive and any person using the product for any purpose other than that specifically recommended in this sheet without first obtaining written confirmation from us as to the suitability of the product for the intended purpose does so at his own risk. Whilst we Endeavour to ensure that all advice we give about the product (whether in this sheet or otherwise) is correct we have no control over either the quality or condition of the product or the many factors affecting the use and application of the product. Therefore, unless we specifically agree in writing to do so, we do not accept any liability whatsoever or howsoever arising for the performance of the product or for any loss or damage (other than death or personal injury resulting from our negligence) arising out of the use of the product. The information contained in this sheet is liable to modification from time to time in the light of experience and our policy of continuous product development.

in surfor a proffe - gpmvni fepostiel Oberflachenpoll wvni temperature overtemperatuur Overtemperatuur viscositeit viscositeit colour pig
 teprüfung fineness of grind maatlijnheid/Maßfeinheit drying time droogtijd Trockenzeit abrasion slijfbaarheid Abriebfestigkeit inspection accessories I
 lanz & 'Haze' corrosion corrosie Korrosion coating thickness gauges coatingdikte meters Schichtdicken messgeräte flash point vlammpunt Flammpun
 che testapparatuur Klimaprüfung appearance uiterlijk Erscheinungsbild inspection kits inspectie kits Inspektionskoffer elasticity & resistance deformat
 onces weegschalen Waagen surface cleanliness oppervlaktezuiverheid Oberflächenreinheit film application filmapplicatie Filmaufziehgeräte coat